

# Centrifugal Compressors

Installed motor power 300 - 9000 kW / 400-12000 hp

Specifications are subject to change without prior notice.  
Never use compressed air as breathing air without prior purification in accordance with local legislation and standards.



**JOY MACHINERY (Shanghai) CO.,LTD.**

No. 1098, Chuansha Rd., Pudong District, Shanghai 201499, China  
Tel.: +86 21 57472600  
Fax: +86 21 57472700

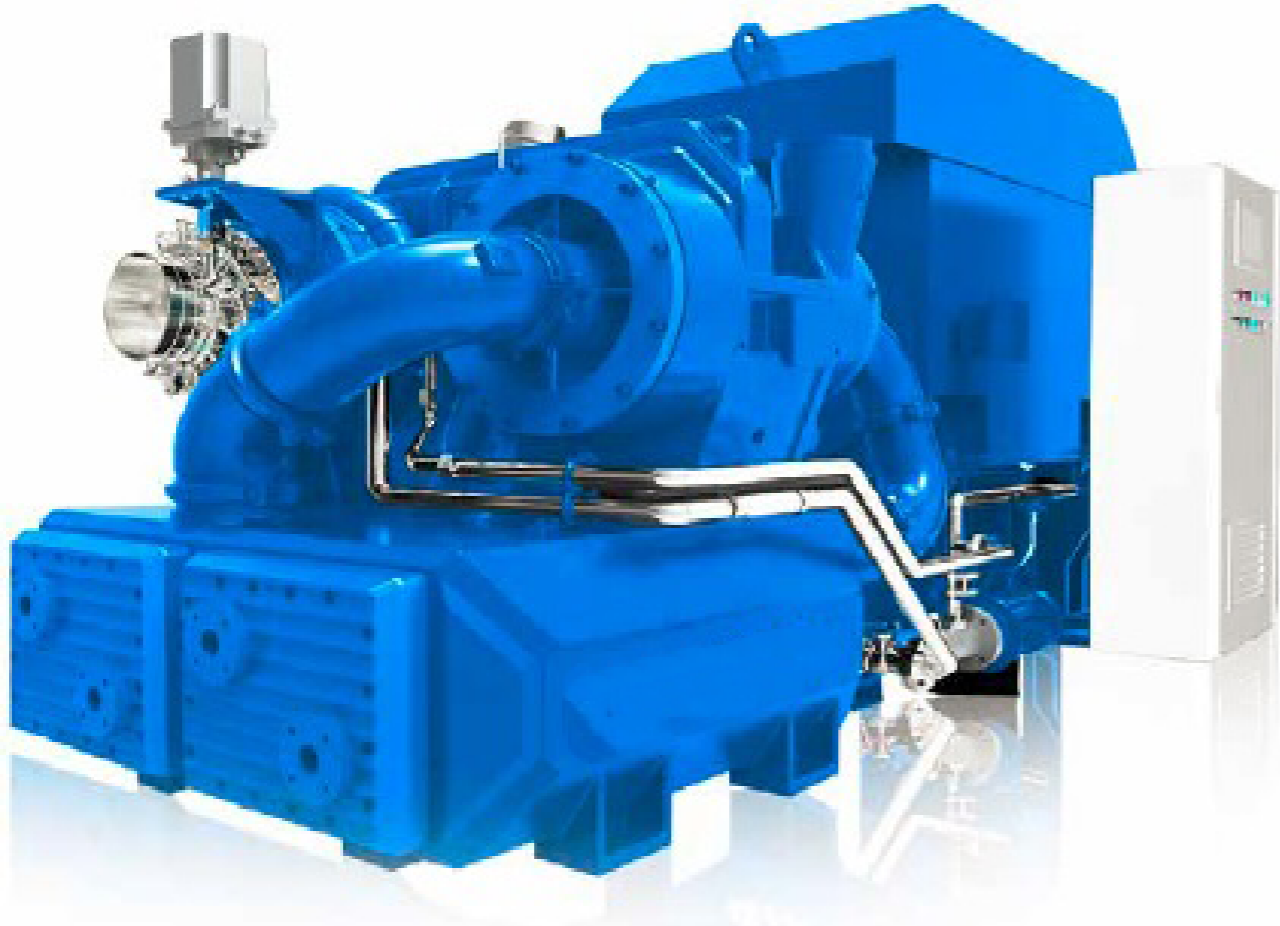
**lcj427@163.com**  
**www.sh-joymachinery.com**

Copyright © 2019 JOY MACHINERY. All rights reserved.



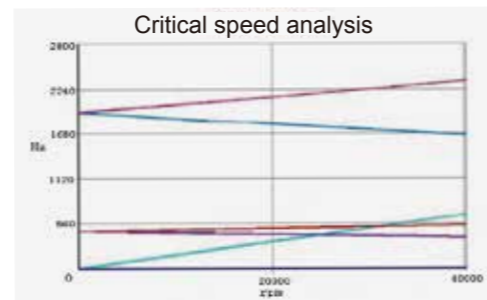
# Centrifugal Compressor

Core technology



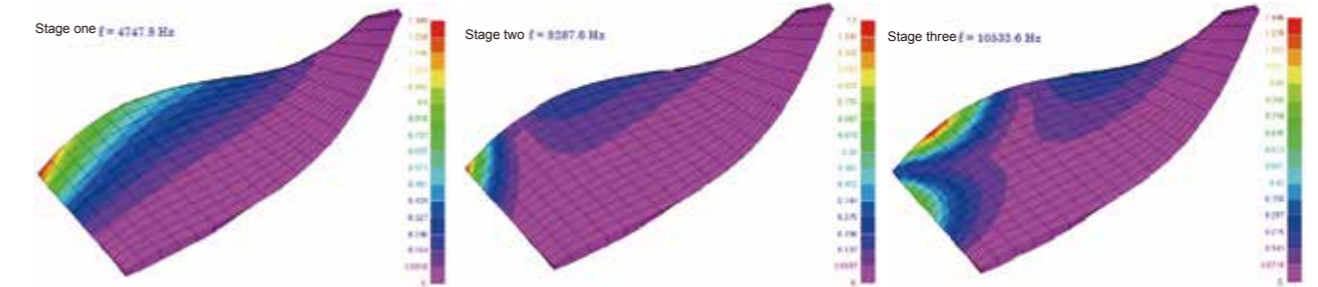
## 01 Rotor dynamic analysis

Rotor system critical speed analysis is the theory of safety operation of compressor.



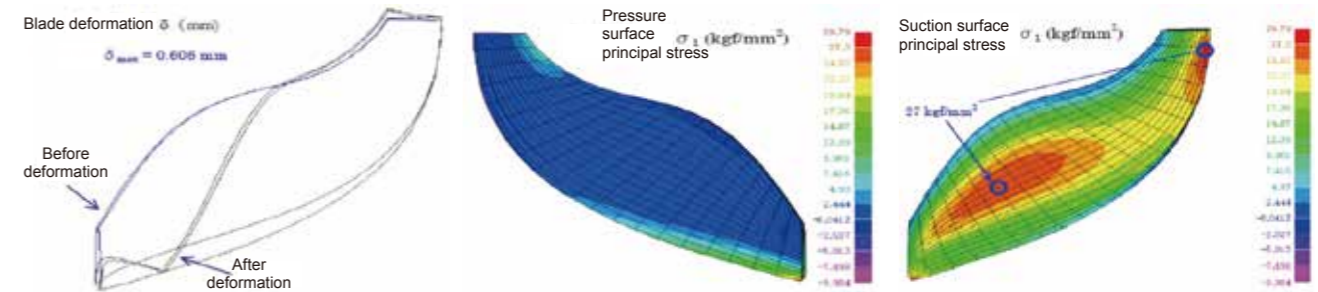
## 02 Rotor modal analysis

Analyze various vibration modes of impeller under high speed rotating state, and adjust relevant design parameters to avoid resonance, ensure stable operation and work of the compressor.



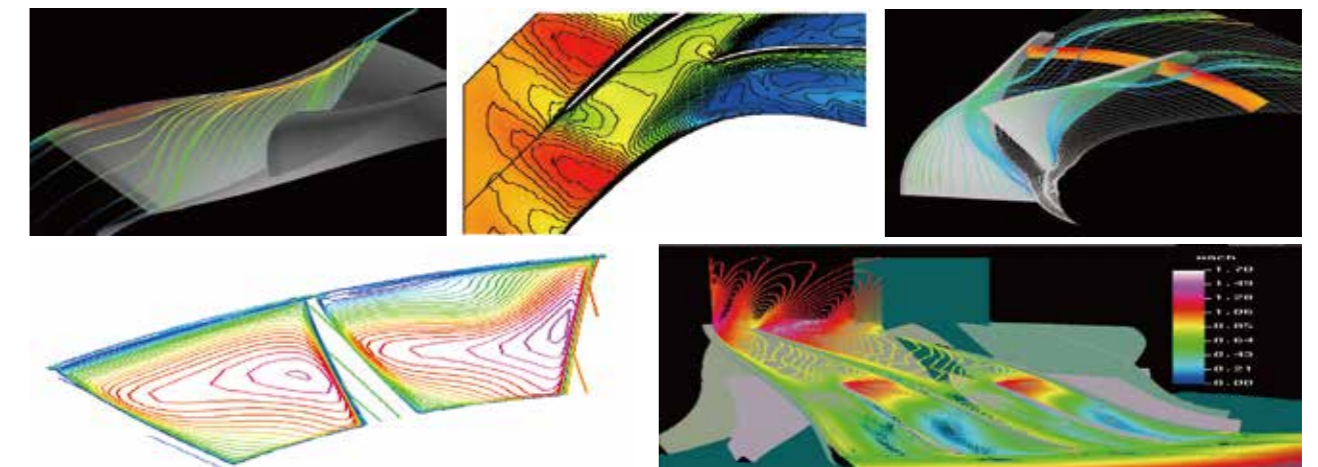
## 03 Stress and strain analysis of impeller

Use the professional designing tool, the impeller strength analysis, and the selection of different materials and structures, the impeller is safe loaded which ensure the long life and stable operation of itself.



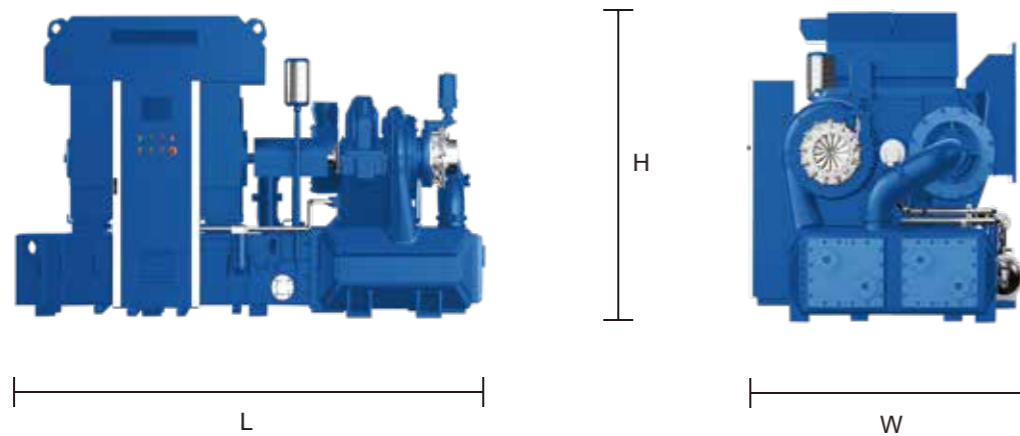
## 04 The aerodynamic design

Through CFD calculation and analysis of the basic model, the shape and collocation of blade, diffuser and scroll are optimized, and the aerodynamic design is constantly improved to achieve higher efficiency and wider turndown range.



## Centrifugal compressor parameter selection

Standard range model of centrifugal fit various pressure and flow requirement of customers.



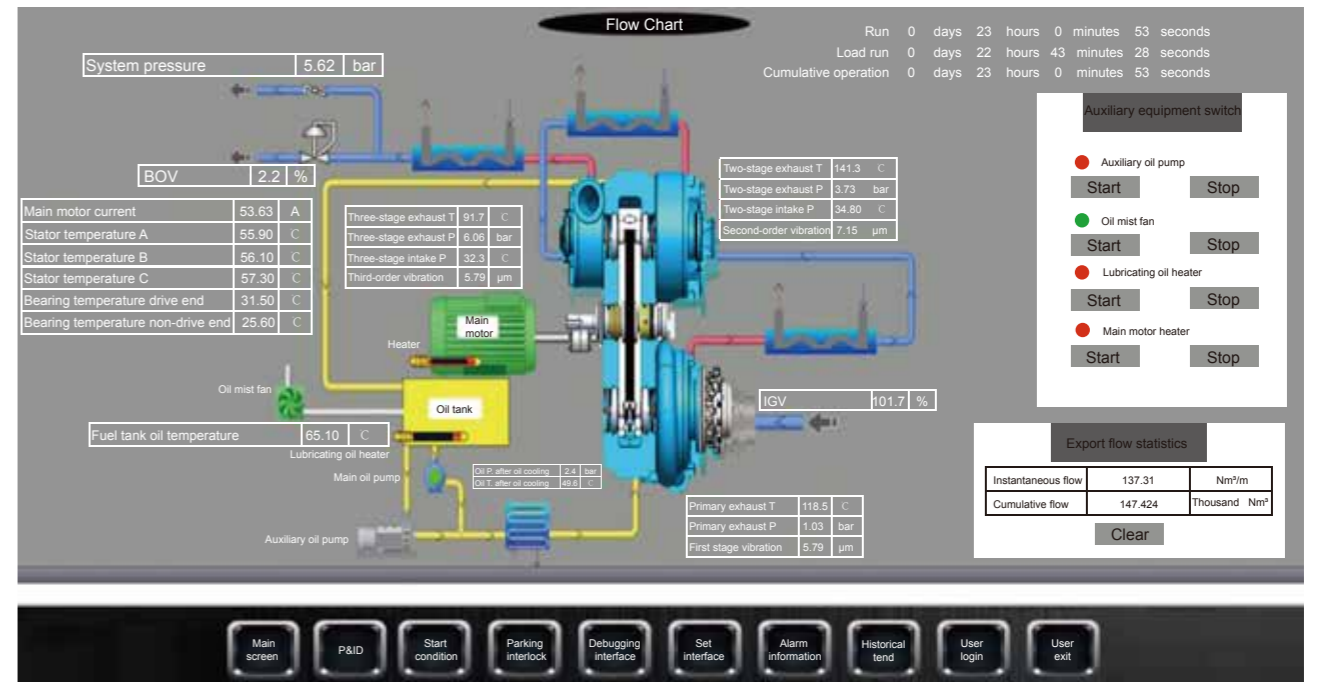
## Technical parameters

Model	Pressure		Flow Rate		Motor Power		Dimensions			Weight kg
	bar	psi	m³/min	cfm	kW	hp	L(mm)	W(mm)	H(mm)	
JMC50	0.6-9	9-131	50-70	1766-2472	300-450	400-600	3280	1850	2200	6300
JMC100	0.6-9	9-131	70-130	2472-4590	400-640	530-900	3800	2000	2250	8160
JMC150	0.6-12	9-174	120-160	4237-5650	630-800	840-1200	4200	2150	2350	11500
JMC200	0.6-16	9-232	160-230	5650-8121	760-1120	1010-1750	4200	2150	2350	12000
JMC300	0.6-16	9-232	230-330	8121-11652	980-1600	1320-2150	4600	2200	2500	17200
JMC400	0.6-16	9-232	330-440	11652-15536	1380-2250	1840-3000	5300	2300	2970	21500
JMC500	0.6-25	9-363	350-580	12359-20480	1800-2850	2400-3800	6000	4500	3500	40000
JMC700	0.6-25	9-363	530-900	18714-31779	2700-4500	3500-6000	8500	4200	4200	45000
JMC900	0.6-25	9-363	850-1500	30014-52965	4200-9000	5800-12000	12000	5000	5300	65000

The above are the 50Hz parameters, welcome to contact factory for specific.

## Advanced control system

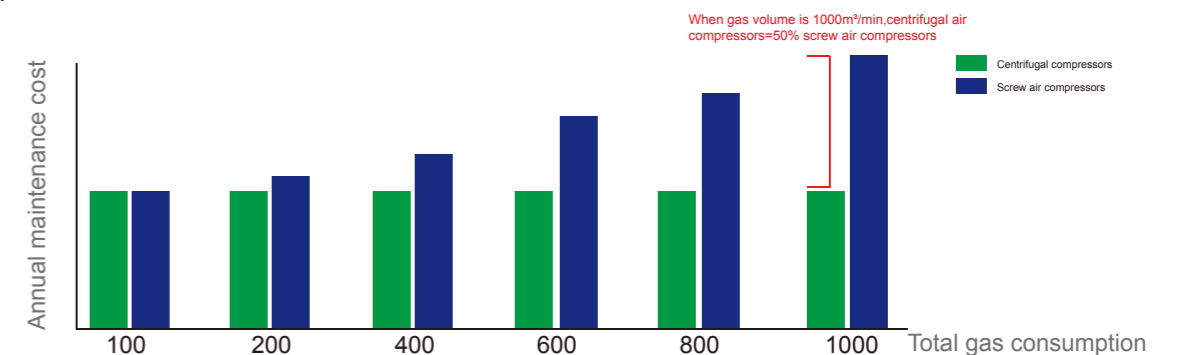
- Standard 12" touch screen, all parameters of the compressor can be viewed on it, easy to operate;
- Standard Siemens PLC, automatic dual mode + constant voltage control mode can be switched locally and remotely to ensure safe and stable operation;
- Automatic remind when the faults occur or maintenance is needed;
- Historical data can be viewed locally and remotely.



## Energy saving and emission reduction



Generally, the larger volume, the higher efficiency. One centrifuge can save about 20% energy when replacing several small screws.



Use centrifuge to replace many screw machines, save maintenance cost & time and site area.

## Air end structure

### Air Seal

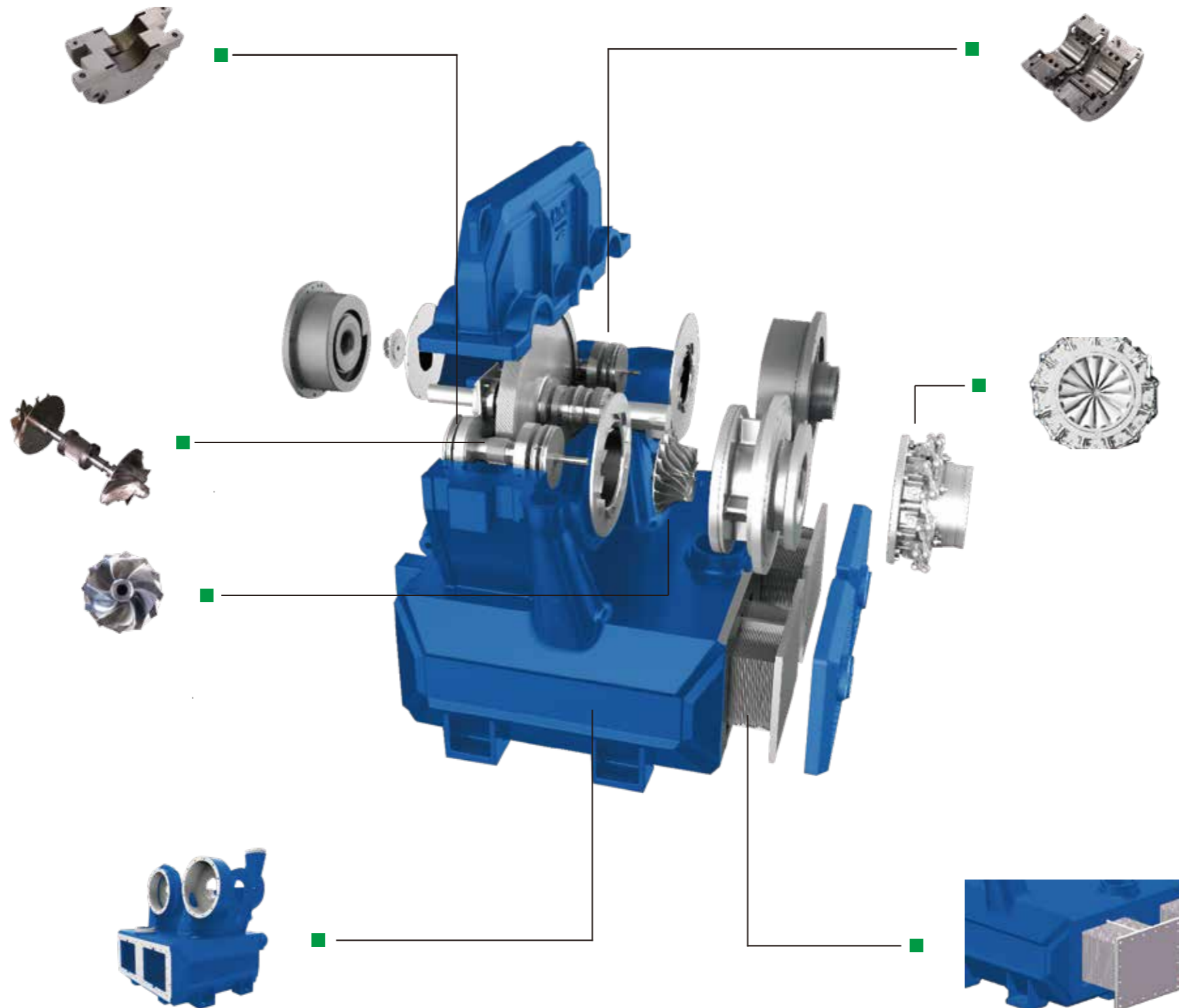
Labyrinth type of gas seal and oil seal, which has no friction between the seal and the shaft, and can keep low leakage for a long time.

### Impeller

Independently developed high-efficiency impeller, 17-4PH high-strength stainless steel integral milling. Every impeller has passed the overspeed test of 115% according to the API standard.

### Gear Box

The gearbox and cooler shell are integral castings, which are more silent and stronger than separated design.



### Bearing

Tilting pad bearing can meet the vibration changing of compressor with the ability of automatic alignment, the babbitt on the tile surface protects the shaft out of damage.

### Inlet Guide Vane IGV

Electrical / pneumatic actuator is applied on the inlet guide vane, turn down range is 70% ~ 100%. The pressure loss of IGV is much lower than other values.

### Gas Cooler

Water in pipe, gas in shell, varies material of tube and fin fit all kinds of site condition. Guaranteed service life and easy maintenance.